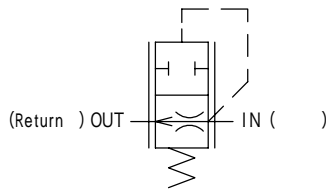
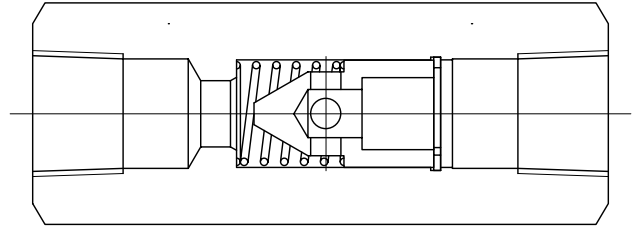


# ABT

## Air bleed valves



- 
- 0.14Mpa(104kgf/cm<sup>2</sup>)

### ABT-03-10-JA-(S4)-J

1 2 3 4

1  
2  
3  
4

: 11 L/min  
S4 : 0.3 L/min  
S5 : 7 L/min

: 21Mpa(210kgf/cm<sup>2</sup>)  
: 0.2 kg

- 가 가
- Return
- Non 가 Return

